

## Accessing ConnSCU Wireless from Windows 7

(Revision Date: 7/27/2016)

### Introduction

This is an encrypted network for students, faculty and staff. It is the recommended wireless network for anyone with a ConnSCU NetID.

You will need a wireless device which supports WPA2 in order to connect to this network, and you will have to configure a wireless connection before you can connect (see details below for platform specific information). Once configured, most clients will be able to reconnect automatically rather than having to re-enter credentials.

### Connecting to ConnSCU Wireless network

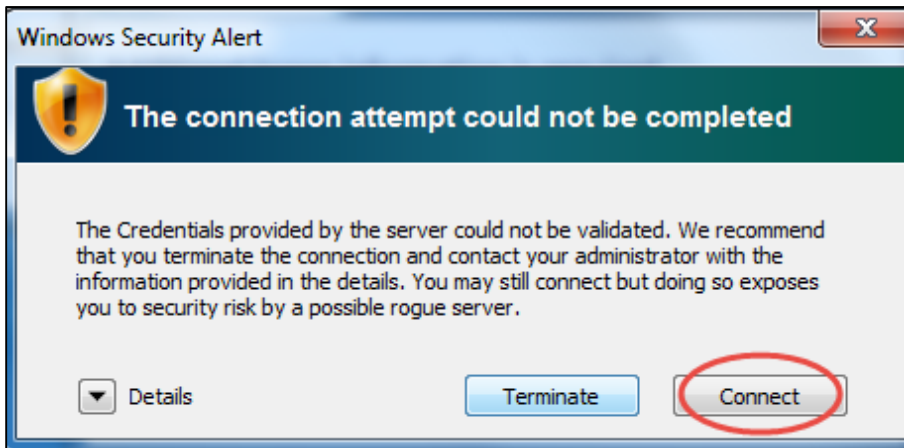
**Step 1** – View available wireless network connections using the wireless utility. Click on the wireless icon in system tray:



**Step 2** – From the list of available wireless networks, select 'ConnSCU' and click 'Connect':

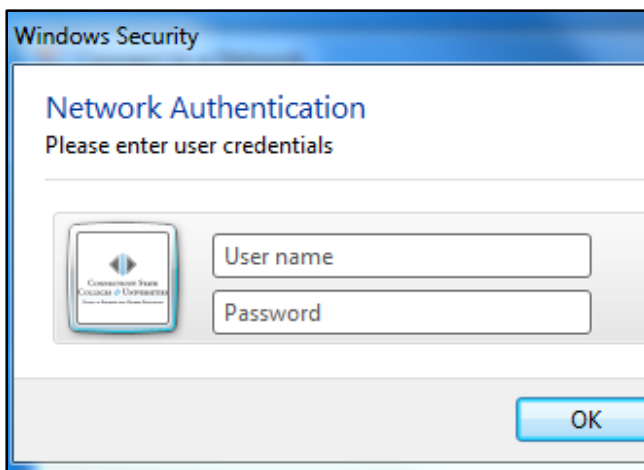


**Step 3** – Click ‘Connect’ on the Windows Security Alert window:



**Step 4** – If you are already logged into Windows using ConnSCU credentials (NetID and password), you will not be prompted to login again and your wireless connection is complete at this point.

- If you are not logged into the workstation using ConnSCU credentials (e.g. you are using a personal laptop), you will be prompted to enter your login credentials. Enter your credentials then click ‘OK’:
- For Community College and BOR System Office users, login with your [NetID](#) and password.



**Username:** 12345678@commnet.edu

**Password:** Existing password

**Finished!**

## Contacting Support

If you have any issues or questions, please contact your [local IT department](#).

[Support Services](#)